

# LionFilter 200

High-Speed and Secure Networking



**LionFilter 200 combines Deep Packet Inspection (DPI) with AI scanning for fast, secure, and centralized network management — all in one device**

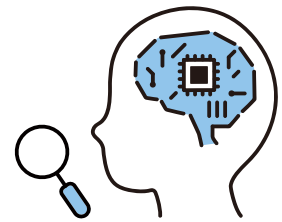


## Key Features

01

Cloud-based AI detects unknown threats and blocks malware and botnets with multi-layered defense

AI learns from massive data samples to accurately detect **zero-day viruses**, and integrates with cloud antivirus for enhanced protection.



02

Equipped with a 10G WAN port and four 2.5G LAN ports for ultra-fast data transmission and smoother network performance

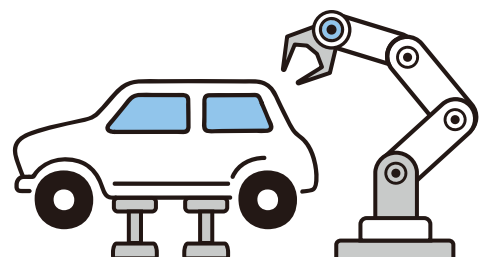
**Deploy VPN infrastructure easily** — no complex configurations required.



03

Supports scenario-based packet scanning with Real-Time Protection Mode and Low-Latency Mode

Perfect for CNC machines, robotic arms, and other latency-sensitive equipment — activate **Low-Latency Mode** to ensure stable and uninterrupted connectivity.



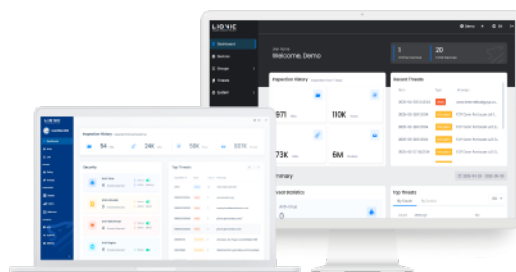
**Supports IPSec (Site-to-Site) and WireGuard (Client-to-Site) VPN for secure access to internal data by branches, remote workers, and mobile staff**



## Real-time visibility into your security

### Monitor Applications and Internet Usage

Group apps by category for flexible control of allowed or blocked items. Analyze traffic behavior per device to quickly identify usage trends and risk sources.



### Smart Bandwidth Allocation

During P2P file transfers, bandwidth management helps limit high-traffic apps to avoid disrupting other connections. Streaming services like YouTube and Netflix are also bandwidth-optimized for stable and efficient performance.

### Intuitive Security Monitoring Platform

With a clean, intuitive interface and multilingual support (Traditional Chinese, English, Japanese), the system is easy to use. Via the CMS, you can remotely manage multiple devices and generate daily, weekly, and monthly reports — boosting security efficiency.

## Why Choose LionFilter 200 ?

### Real-Time Threat Protection Database

Subscribe to the latest signature updates to maintain proactive and immediate defense.



### Continuously Expanding Threat Encyclopedia

Consolidates attack data and behavioral insights to help users respond to threats and implement proactive measures.



### Market-Proven Threat Intelligence

Successfully deployed in the U.S. and Japan, with proven capabilities in threat prevention.



### Dual Protection with an Efficient Engine

Combines cloud and endpoint scanning with patented tech to detect and block viruses, hacks, and phishing.



# LionFilter 200

*Offers Comprehensive Cybersecurity Protection*

## External Threats

## Internal Threats



### Unauthorized External Access

Monitors incoming data with firewall and IPS/IDS to block unauthorized access to the internal network.

### Unauthorized Internal Access

Prevents internal computers from being hijacked and used for attacks or spreading malicious content.

### Inappropriate Web Access

Filters web access to stop downloads of infected files.

### Application Control

Restricts the use of specific applications within the internal network.

### Virus Infections

Scans downloaded files and emails using AI signatures to detect and eliminate viruses.

### Virus Propagation

Detects viruses in uploaded files or outgoing emails to prevent further spread.

### Spam and Phishing Emails

Prevents data breaches by blocking spam and phishing attempts.

### Internal Network Attack Prevention

Stops compromised internal devices from launching DoS or other attacks on the network.

### Blocking Malicious Websites

Detects and intercepts malicious traffic to stop hackers from remotely controlling internal devices.

### Web Filtering

Blocks access to inappropriate websites, including adult, drug-related, and criminal content.

